

Usermanual of App „MenuDesigner“

„MenuDesigner“ has principally two user surfaces:

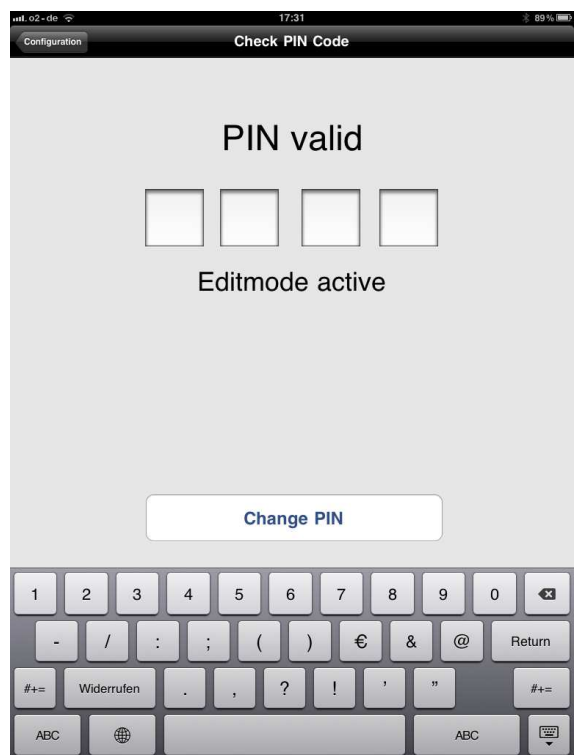
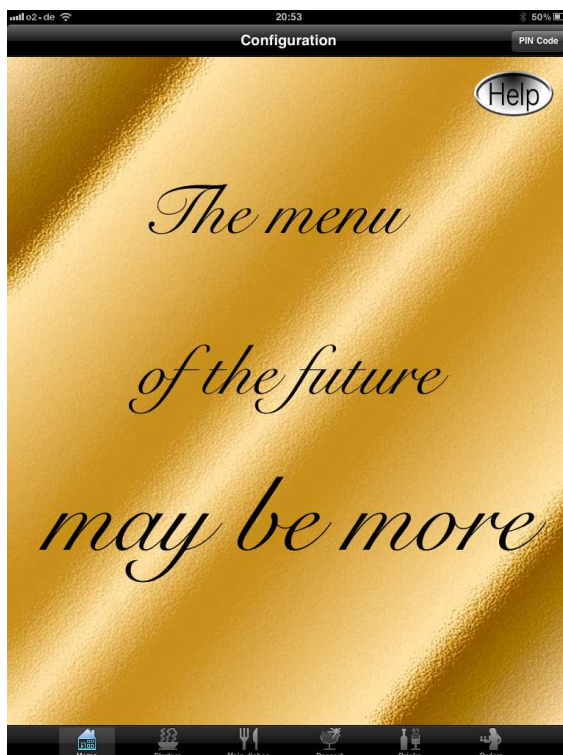
- The User surface which shows the menu with all selection- and ordering functions
- The Edit surface to fill in the menu

For start up please use the **edit surface** to fill in the content of the menu.

For the **Edit Surface** there are 2 access modes:

- (1) Coming from the User surface use the button “Enter Pin Code”, above right. You will be asked “Enter Pin Code”. The Standard Pin Code at the beginning is 0000.

Please change the Pin Code and memorize it, otherwise the App can not be edited anymore. There is no way to reset the Pin Code.



If this way is not working you have not yet switched on the Edit Mode and you have to use the second way to get to the edit surface.

Press adjustment button at the iPad. You will find the icon for the App “MenuDesigner”. Touch it and you get on the right side of the screen the list of adjustments.

Go back to the starting screen of the iPad with all the App icons. Touch the icon “MenuDesigner” and than the icon adjustments (gear wheels) and subsequent the icon “MenuDesigner” in the listing on the left. You will get a smaller listing to the right with adjustments of “MenuDesigner”.



The first 3 lines (Top Label) are used for the welcome script shown on the first page of the menu (welcome page) accordingly for the first, second and third line of the page.

The 4. line is used to change the currency symbol (it is pre adjusted in Euro).

The 5. line switches between black and white fonts in the first page of the menu. Changes will be activated after an initial change of the view.

The 6. line switches the Edit mode on and off.

Remark: With edit mode switched off you cannot come to the edit surface with a PIN Code

Remark: In the "User Surface" you will see only the buttons of the versions you have bought (for example starters, main dishes, desserts ...). Changes of the icons will be visible after a new start of "MenuDesigner"

(2) Edit Surface

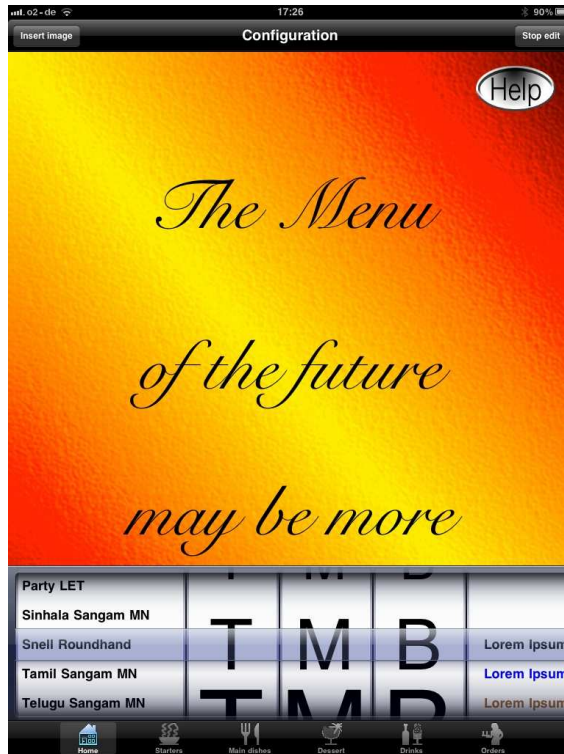
You can get to the Edit Surface by touching the button "Pin Code" and entering the pin code. The default code is: 0000.

Important notice: Please change the pin code and memorize well. A forgotten pin code can not be reset and the program is no longer editable.

The edit surface allows you a huge number of personalized configurations of the menu.

- 1. Background colour and pattern** can be selected from a catalogue, separately for all 5 main planes (Home, Starters, Main Dishes, Desserts, Beverages). For this touch the button "Configuration" (above, left) in the respective main plane. You will get a catalogue with 80 backgrounds. For the Home side you can also upload your own pictures. To achieve this touch the screen in the middle and you will get a register of your photo album from where you can select your favourite pictures. These pictures must be prepared by you at first.

2. The script at the welcome page (Home)



After entering the correct pin code you will get 5 register wheels to select the script.

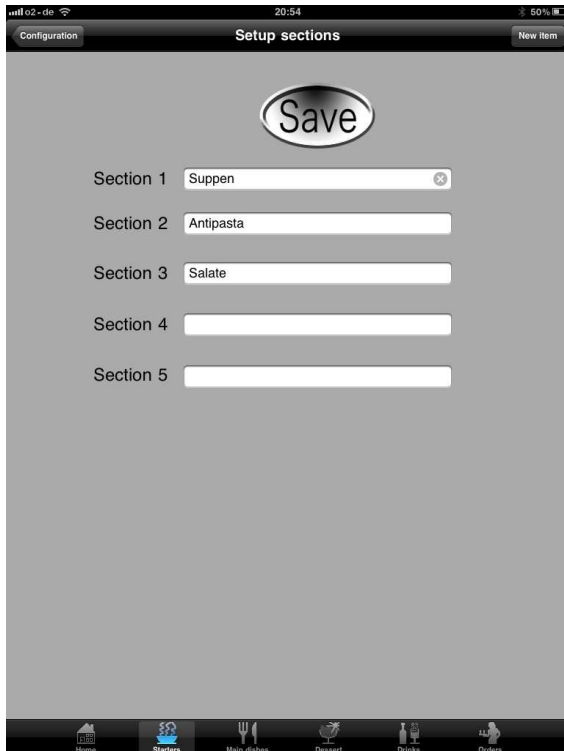
The 1. register determines the font of the script. You can select between 57 fonts.

The 2. till 4. register defines the font size of the respective line 1 to 3 of the welcome text.

The 5. register selects the colour of the font from a catalogue of 14 colours.

The registers disappear after touching the button "Edit Mode Finished".

3. Completing the menu



← Button New Item

For each main plane you can select between 5 sections to group your dishes. These sections can be used and titled in any order. For instance you can select as starters the sections soups, salads, antipasti, cold dishes etc.

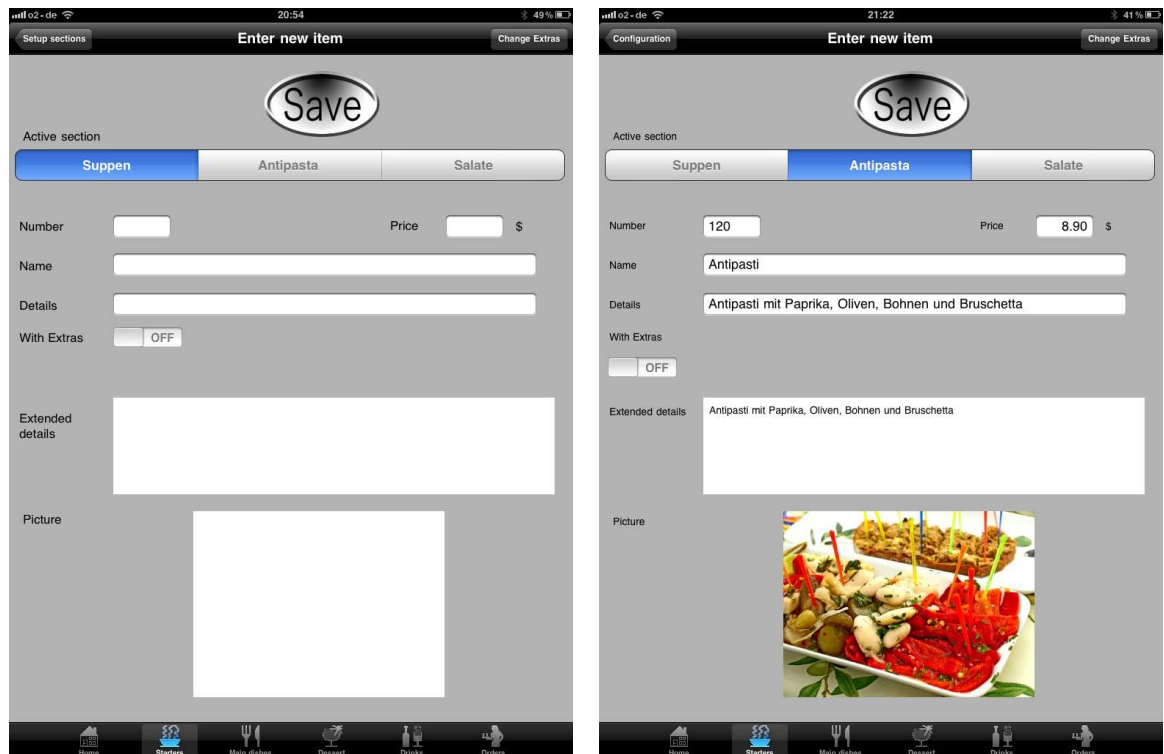
In the User Surface the sections are separated by grey bars titled with the respective section. You can enter the title of the section by touching the button "Edit sections" (above, right). Enter the designated description of the section and touch the button "Save". The saving process will be confirmed by pop-up label.

All dishes are dedicated to a section, therefore it is very important to describe the respective section with great accuracy. A later change of the section name will result in a new entering of the dishes in this section.

After defining the section you can enter the respective dishes in touching the button "New Item".

You will get a template to enter

- name of the dish
- description of the dish
- detail information to the dish



For the first step select the section, than enter a number for the dish. This number is unique and only valid for this dish. You can not use it twice. Already used numbers will not be accepted, although when not visible because linked to a different section.

Besides this number you can enter the price for the dish.

Important: The format is 00.00, separation by dot not comma.

Beneath you can enter the name of the dish and in the next line a description of the dish. In a larger area further beneath you can enter more detail information and appetising description of the dish.

In the lowest area of the template you can enter a nice photo of the dish. For this please touch the area and you will get a register of your own photos. Before that you need to upload your photos in this register.

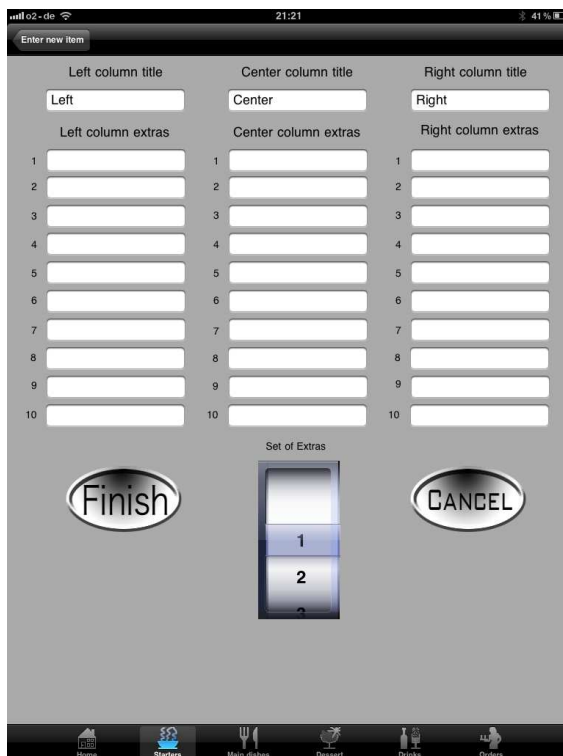
In the middle of the template, beneath the description of the dish you will find button "Extras". With it you offer your guests the convenience of separate requests like baked potatoes instead of noodles for this dish. You can switch this button in every section.

Extras



← Button Change Extras

After its activation you will get a bar with 10 buttons. Each button enables a list 3 times 10 different special requests for this dish. To select touch the button "Change Extras" (above, right).



You will then see a template with 3 columns for extra requests. You can use the left one for variation of side dishes and the right one for meat orders like medium, rare...or other requests like hot, extra hot....

The entered descriptions are shown in the user surface as headlines in the selection wheels.

To save the inputs touch the button "Save". By touching "Cancel" the input is extinguished.

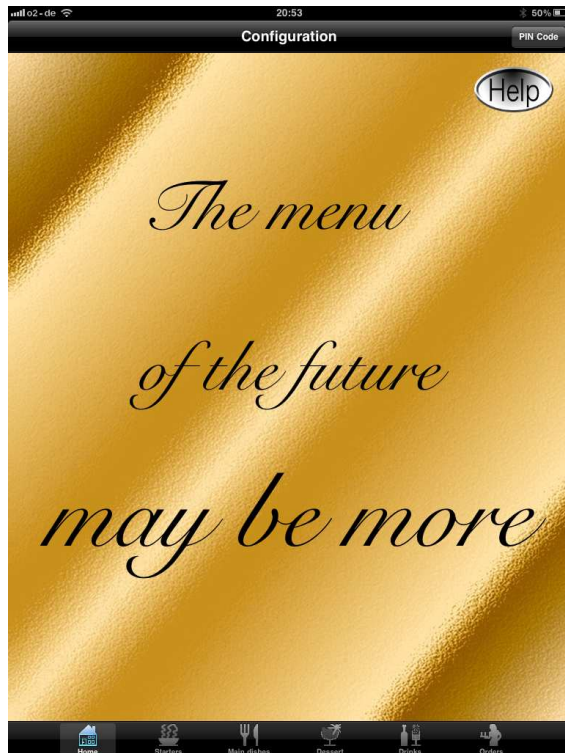
Please touch at the end of the input for a dish the button "Save", if not you lose your input.

These processes are the same for all main planes, sections and dishes input. In the case of a wrong dedication of a dish to section you can easily change this by changing the section name in the top bar.

If you want to delete a dish just wipe to the right on the name of the dish in the

register of dishes under one section. You will see a pop-up button "delete", touch it and the dish is erased.

User Surface



To get to the user surface just touch "Edit Finished" (above, right) and you come to the Welcome side (Home). This is the screen your guests will see first.

To run over the pages of the menu you touch one of the lower buttons with the icons Starters, Main Dishes etc. You will see all dishes listed under that headline, separated under the different sections.





By touching the picture of a dish you can enlarge the picture and see all informations and descriptions of the related dish.



In case the extra button was activated at a certain dish, the guest will be asked to choose his special requests. For this the prepared list of extras will pop-up and the guest can select.



Now the guest needs to touch the ordering button of this dish to order it and he will see the picture flying to the lower right corner.



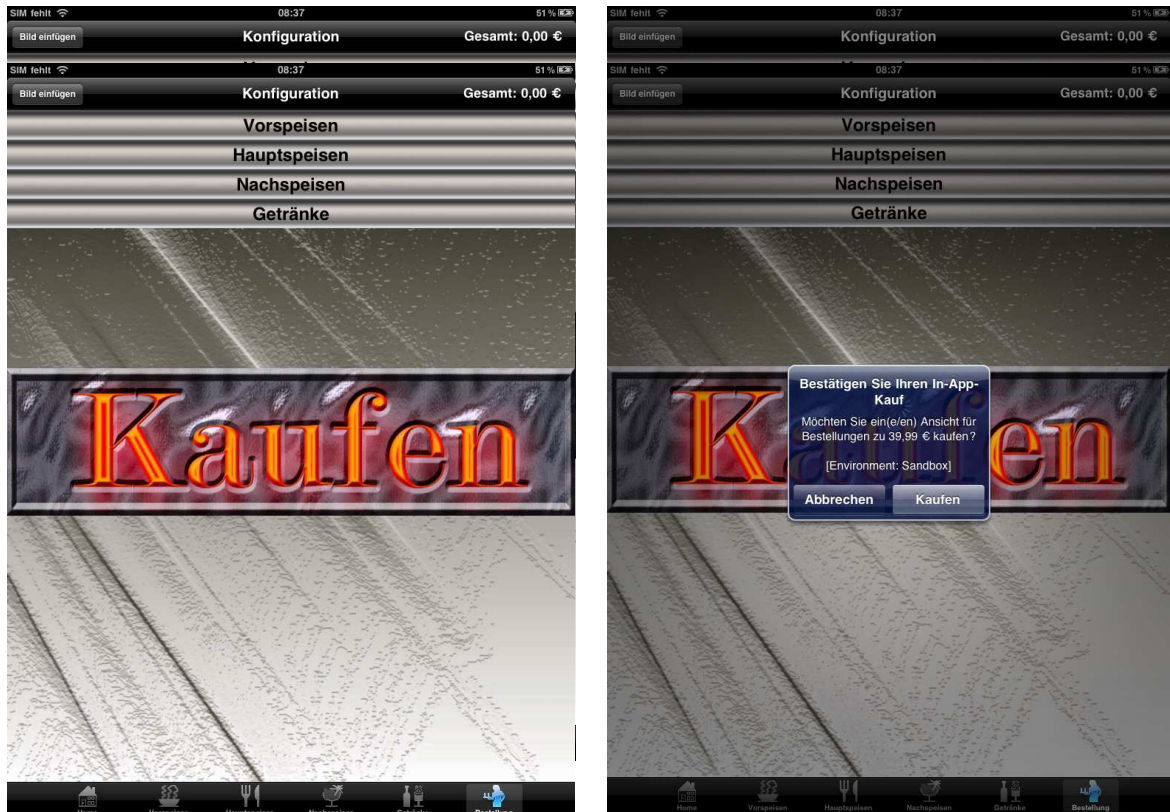
After selection of all dishes and beverages the guest can verify the total order by touching the order button at the lower right corner. He will get a presentation of all dishes with selected extras, all prices and the total sum of the order.

Now he can delete or change certain dishes or beverages. To delete he should touch the button "Delete", for changes just touch the line of the dish.

For the waiter there is a "Reset" button (above, left) to delete all after payment.

← Verify order

In the base version of “MenuDesigner” you will get only the Homepage. All further 5 main views (Starters, Main Dishes...) needed to be bought separately. In every main plane you will find a big “Buy” bar.



By touching this bar you can start the process of buying. After successful purchase the bar will disappear and the selected main plane is ready for use.

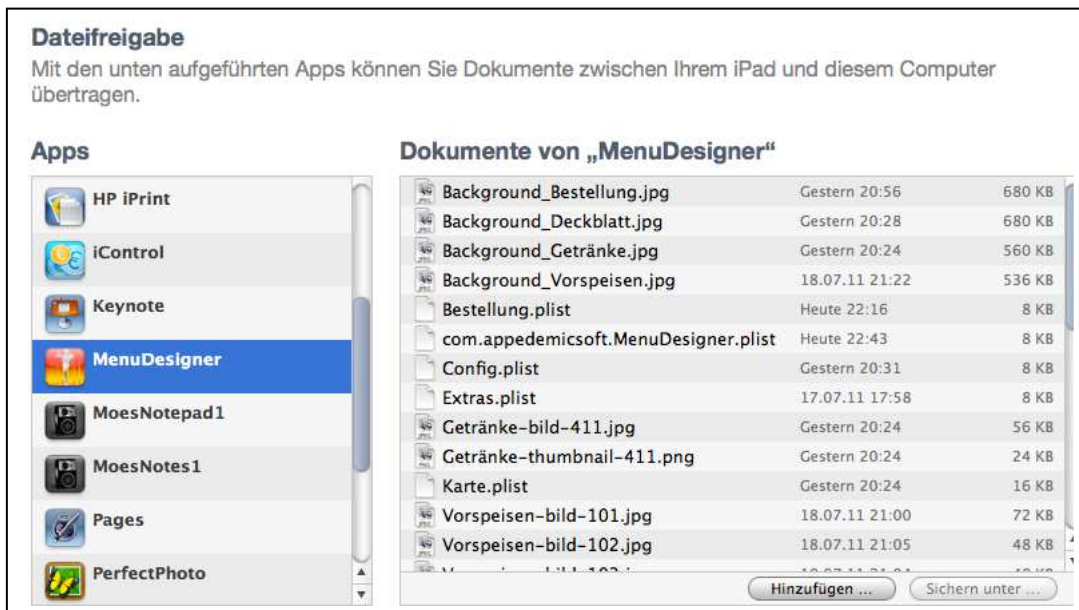
If during the purchase process the view was changed it may happen that the bar with “Buy” label will not disappear. In this case start the purchase process again without changing the view on the screen, you will have no extra costs as the purchase will be done only once.

Synchronisation of several iPads

If you want to change a menu on one iPad you may transfer this change to all other iPads. To do this you need to synchronize the first iPad with iTunes on a PC. All other iPads can be synchronized with iTunes and will get the same information status.

Follow this process:

1. Connect the iPad with the computer by cable
2. After recognition of the iPad open iTunes and select in iTunes on the left listing the iPad and then select the App.



3. Select App MenuDesigner under data and choose all files in the right window and save on your hard disk.
4. Change the iPad and select again the App MenuDesigner and data
5. Select “add data” and save the data to your iPad



Important: Please switch off the App “MenuDesigner” at all synchronizing processes.



Correct, App switched off



Wrong, App still open

Next innovations at "MenuDesigner"

In a further stage of extension of "MenuDesigner" the order process will be completed by sending the electronic data directly to a cashier system. From there an automatic information flow to the kitchen and bar will be established.

This and further innovation steps will be offered to you periodically and in time.